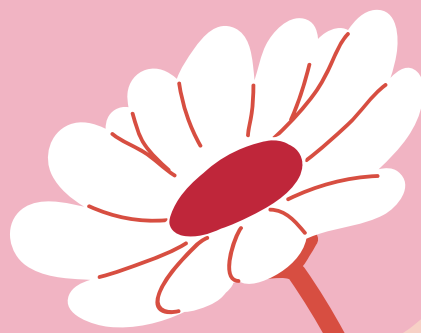
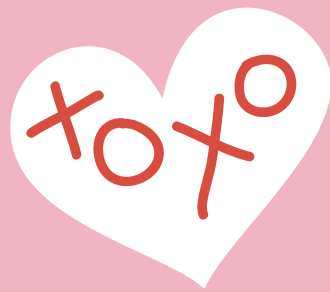




# DATING PROFILE!

Love is here



# LOVE FORM

Complete this form, and be as honest as possible.



## YOUR BASIC INFORMATION

Age Range: 26

Location Details: California

Relationship Status and History:  
Single, one relationship in the  
past

What You're Looking For: A  
genuine connection with room to  
grow

## **YOUR PROFESSIONAL LIFE**

Career Field: Creative and digital- work

Work Schedule Impact: Weekdays,  
flexible hours

Career Phase: Stable and building  
momentum

## **YOUR LIVING SITUATION**

Housing Status: Renting

Pet Ownership: One dog

Space Limitations: Small, cozy place



## **YOUR TIME AVAILABILITY**

Schedule Flexibility: Flexible with some  
planning

Response Time Expectations: Replies  
within a day

Planning Timeline: Prefers plans a few  
days ahead

## **YOUR DEAL BREAKERS**

Must-Haves: Kindness, honesty, emotional awareness

Lifestyle Choices: Non-smoker, socially active, balanced routine

Religious or Political Alignment: Open-minded



## **YOUR COMMUNICATION STYLE**

How You Express Yourself: Thoughtful and warm

Conflict Approach: Calm discussions, problem-solving mindset

Texting vs In-Person: Enjoys both

## **YOUR CURRENT LIFE PHASE**

Recent Major Changes: personal goals

Growth Areas: Confidence and work-life balance

Life Goals Timeline: Focused on steady progress

## **YOUR PHYSICAL DESCRIPTORS**

Height: 6 feet

Body Type: Healthy and active

Distinguishing Features: Brown Eyes



## **YOUR SOCIAL CONTEXT**

Friend Group Size: Small but close-knit

Family Closeness: Regular contact, strong support

Social Activities: Casual outings, game nights, short trips

## **YOUR ACTUAL AVAILABILITY**

Dating Readiness: Emotionally ready and open

Time Investment Capacity: Can make time weekly

Geographic Limitations: Prefers nearby connections

# Find Your Perfect Match

— *with* —



## Dating App

LOG IN

SIGN UP



# Dating Profile

Complete this form, and be as honest as possible.

## YOUR BASIC INFORMATION

Age Range:

Location Details:

Relationship Status and History:

What You're Looking For:

## **YOUR PROFESSIONAL LIFE**

Career Field:

Work Schedule Impact:

Career Phase:

## **YOUR LIVING SITUATION**

Housing Status:

Pet Ownership:

Space Limitations:

## **YOUR TIME AVAILABILITY**

Schedule Flexibility:

Response Time Expectations:

Planning Timeline:

## **YOUR DEAL BREAKERS**

Must-Haves:

Lifestyle Choices:

Religious or Political Alignment:

## **YOUR COMMUNICATION STYLE**

How You Express Yourself:

Conflict Approach:

Texting vs In-Person:

## **YOUR CURRENT LIFE PHASE**

Recent Major Changes:

Growth Areas:

Life Goals Timeline:

## **YOUR PHYSICAL DESCRIPTORS**

Height:

Body Type:

Distinguishing Features:

## **YOUR SOCIAL CONTEXT**

Friend Group Size:

Family Closeness:

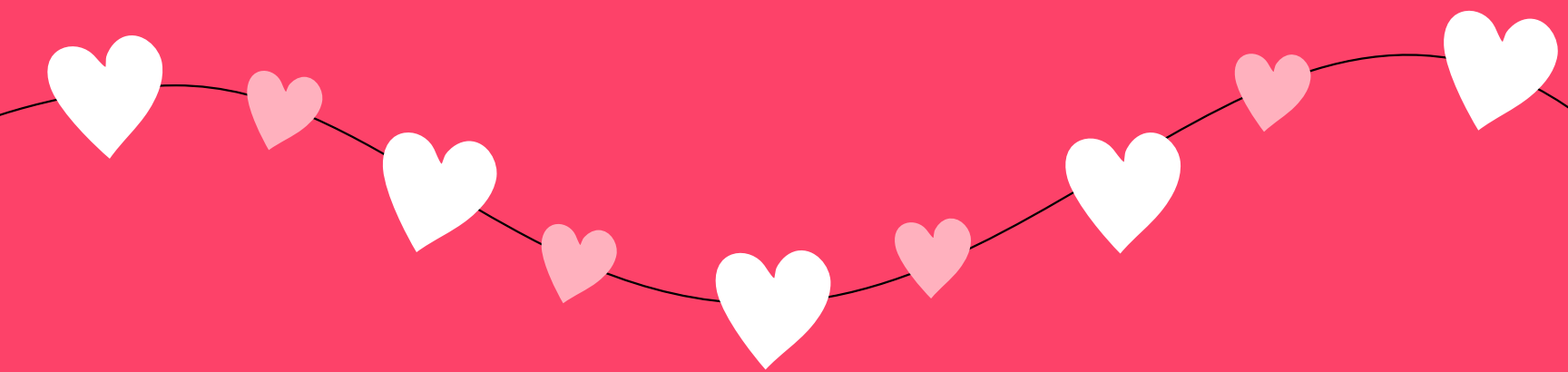
Social Activities:

## **YOUR ACTUAL AVAILABILITY**

Dating Readiness:

Time Investment Capacity:

Geographic Limitations:



**Happy  
Dating!!**



# Dating Profile

There is never a perfect time or place for true love. It always find you.

Dating Apps Edition

# Dating Fun Form

Complete this form, and be as honest as possible.

## **YOUR BASIC INFORMATION**

Age Range:

Location Details:

Relationship Status and History:

What You're Looking For:



## **YOUR PROFESSIONAL LIFE**



Career Field:

Work Schedule Impact:

Career Phase:

## **YOUR LIVING SITUATION**

Housing Status:

Pet Ownership:

Space Limitations:

## **YOUR TIME AVAILABILITY**

Schedule Flexibility:

Response Time Expectations:

Planning Timeline:

## **YOUR DEAL BREAKERS**



Must-Haves:

Lifestyle Choices:

Religious or Political Alignment:

## **YOUR COMMUNICATION STYLE**

How You Express Yourself:

Conflict Approach:

Texting vs In-Person:

## **YOUR CURRENT LIFE PHASE**

Recent Major Changes:

Growth Areas:

Life Goals Timeline:

## **YOUR PHYSICAL DESCRIPTORS**

Height:

Body Type:

Distinguishing Features:

## **YOUR SOCIAL CONTEXT**

Friend Group Size:

Family Closeness:

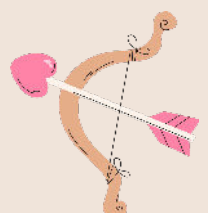
Social Activities:

## **YOUR ACTUAL AVAILABILITY**

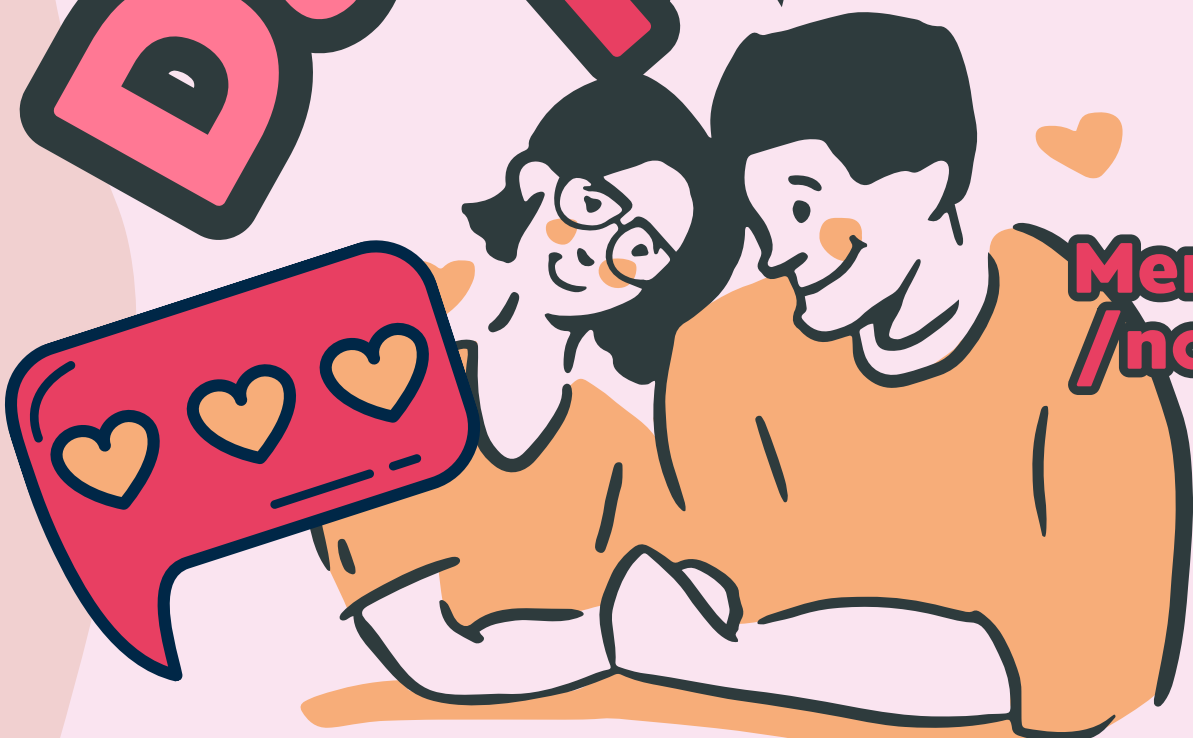
Dating Readiness:

Time Investment Capacity:

Geographic Limitations:



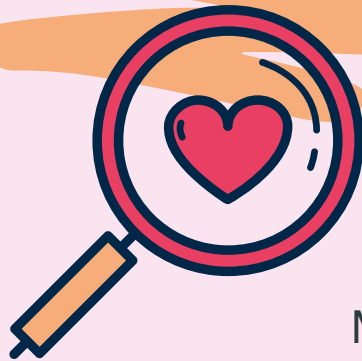
# Dating Profile



For  
Men/women  
/non-binary

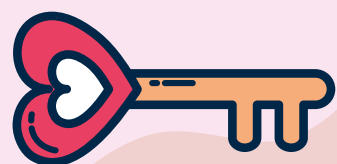


Find Your  
Perfect  
Match!



Meet real people,  
make real  
connections, and  
have fun!

Be honest, meet the love of your life.



# *Find your match!*

Complete this form, and be as honest as possible.

---

## **YOUR BASIC INFORMATION**

Age Range:

Location Details:

Relationship Status and History:

What You're Looking For:

## **YOUR PROFESSIONAL LIFE**

Career Field:

Work Schedule Impact:

Career Phase:

## **YOUR LIVING SITUATION**

Housing Status:

Pet Ownership:

Space Limitations:

## **YOUR TIME AVAILABILITY**

Schedule Flexibility:

Response Time Expectations:

Planning Timeline:

## **YOUR DEAL BREAKERS**

Must-Haves:

Lifestyle Choices:

Religious or Political Alignment:

## **YOUR COMMUNICATION STYLE**

How You Express Yourself:

Conflict Approach:

Texting vs In-Person:

## **YOUR CURRENT LIFE PHASE**

Recent Major Changes:

Growth Areas:

Life Goals Timeline:

## **YOUR PHYSICAL DESCRIPTORS**

Height:

Body Type:

Distinguishing Features:

## **YOUR SOCIAL CONTEXT**

Friend Group Size:

Family Closeness:

Social Activities:

## **YOUR ACTUAL AVAILABILITY**

Dating Readiness:

Time Investment Capacity:

Geographic Limitations: